

bribes, they managed to "convince all bodies", including the judiciary, that it was "sensible" to use the by-product sodium fluoride as a caries-inhibiting substance in toothpaste.

Gradually, the "attitudes" changed, so that it "overshadowed" all the serious damage that fluoride was known to cause.

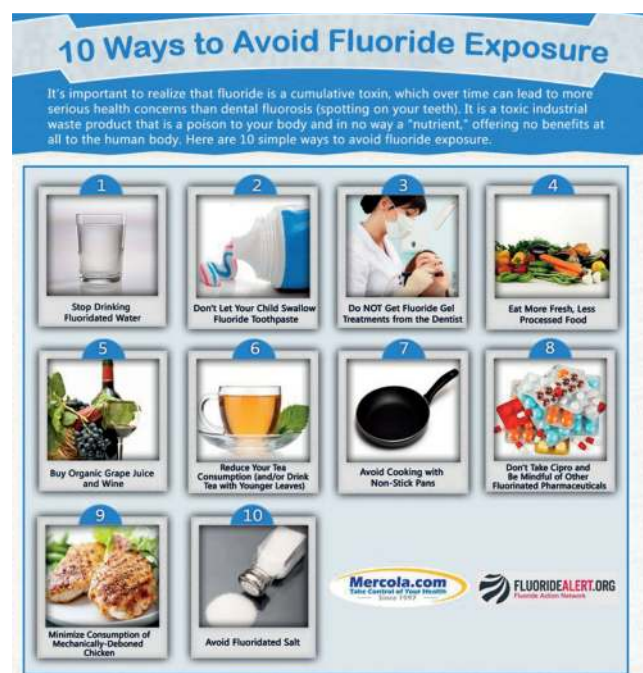
Ironically, in 1943 both the American Medical Association and the American Dental Association advised against the use of fluoride supplementation, so it was already shown then how toxic fluoride really was.

As early as 1943, the American Medical Association stated that fluoride is a common protoplasmic poison that can alter the metabolism of cells by inhibiting certain enzymes.

You know that consciousness is shut down, the pineal gland is affected.

Fluoride is therefore also used in the manufacture of psychopharmaceuticals for patients, which cause them to become more "calm and compliant".

Likewise, it is also known that the function of the thyroid gland is reduced by fluoride. Children's intelligence decreases, and the list of poisonings is long.



The cocktail effect. It's just a little poison in small amounts!!

How often do we hear this remark from authorities: "It's just a little poison in small quantities" which does not justify wanting to completely remove the toxins from our environment, which are obviously harmful to health. Going forward, action plans are being drawn up to lower toxins. It looks good on paper, but nowhere does it say that they should be abolished completely.

Relatively little is known about how our bodies are affected when we are exposed to many different chemical substances at the same time.

Perhaps the one chemical substance in a small amount does not pose a risk, but what happens if you get many small amounts of chemical toxins into the body at the same time?

We have been bottled up in a consumer society and have been made dependent on living in an artificially produced environment, full of toxins and harmful radiation, It has seduced us, and accustomed us to being completely normal, even though we are in a materialistic dead end that chokes life on earth.

Many of the toxins that accumulate in the body affect both our nervous and hormonal systems as well as our immune system and weaken our vitality.

It increases the risk of diseases such as diabetes and lymphoma and causes behavioral disorders, lower intelligence, and lower fertility. Allergy, stress, gastrointestinal problems, obesity, cancer,

hormonal disorders, metabolic and neurological diseases, etc. has grown explosively in line with the pollution.

The massive environmental problems must be stopped before it is too late. It is not done by setting up taxes with the distraction of false sales pitches that climate problems are man-made through over-consumption of CO2.

The companies and politicians who help keep this poison industry going must be held accountable.

Likewise, VAT should be completely abolished on biodynamic products. In this article, an example is seen in the biodynamic farmers who work every day for a better soil with greater biodiversity, who are going to pay more in VAT because they cannot produce on equal terms with conventional agriculture, which wastes and pollutes our soil.

Velstandspartiet JFK21 in Denmark has as key issues related to the environment:

- Agriculture must be 100% state-controlled organic. **22 Agricultural policy, LINK**
- OMS replaces VAT. This will ensure a lower rate, increased employment, and less bureaucracy. It will benefit organic biodynamic farmers, as well as people who want to practice permaculture. **06 OMS Replaces VAT, LINK**
- Green taxes on electricity and water are halved. The big companies also must help pay. **09 Green Taxes, LINK**
- Decentralization, the number of municipalities is increased, parishes are reintroduced into the economy. **10 Decentralization - Number Of Municipalities Increases, LINK**
- The property tax is gradually being removed. **08 Property Tax Gradually Removed, LINK**
- Environmental policy. Companies that pollute must continuously set aside adequate amounts to cover estimated costs for the cleanup. In particularly serious cases, companies can be compulsorily dissolved. **23 Environmental policy, LINK**
- Health. Natural medicine is again equated with conventional medicine and pharmaceuticals. In addition to patentable synthetic medicine, universities must also educate about natural, non-patentable medicine and the healing effects of healthy diet. **21 Health, LINK**

Links:

- Vitality - From soil to stomach by Jens-Otto Andersen, **LINK**
- A Biodynamic Guide to Food Quality, **LINK**
- Entangled Life How Fungi Make Our Worlds, Change Our Minds & Shape Our Futures, Merlin Sheldrake, **LINK**
- Research: Fluoride from toothpaste or bottled water can harm children's intelligence, **LINK**
- Use of fluoride in dentistry An overview article by Henrik Lichtenberg, **LINK**
- The greatest human experiment is underway, **LINK**
- That is how harmful pesticides are in the drinking water, **LINK**
- Fertilizer and pesticides, **LINK**
- Pesticide residues in drinking water set a new record, **LINK**
- Spraying agent strategy 2022-2026 Action plan for reducing pesticide load in Denmark, **LINK**
- U. Hass, J. Boberg, M. Axelstad, L.K. Isling, S. Christiansen, P.R. Jacobsen, K.Mandrup, A.M. Vinggard, C. Taxvig, M.E. Poulsen, S.S. Herrmann, B.H. Jensen, A. Pedersen, L.H. Clemmensen, B.K. ERsbøll (2012): Developmental toxicity effects in experimental animals after mixed exposure to endocrine-disrupting pesticides. Research No.141 Danish Environmental Protection Agency.
- Republished study: long-term toxicity of a Roundup herbicide and a Roundup-tolerant genetically modified corn, **LINK**
- Copper and zinc from pig manure destroy the soil, **LINK**

